

March 24, 2024



St. John  
Paul II School  
**ALL SCHOOL NEWS**

Translate | Traducir |  
Traduzir

**Did you know?**

- The **Blue & Gold Annual Fund** is an essential yearly fundraising campaign that supports and advances St. John Paul II School's mission-driven programs, including mission and ministry, financial assistance, academic enrichment, faculty development, extracurricular activities, and capital improvements, through your generous contribution.
- You can choose where to direct your gift!

**8 MORE DAYS TO DOUBLE YOUR IMPACT!**

**All NEW and INCREASED gifts during MARCH will DOUBLE!**

**\$33,416.50**

**\$50,000 Goal**

*Click to **DOUBLE** your impact!*

**Mass Schedule and Prayer**

Mass: Mondays and Wednesdays, at 7:30 A.M. in the Chapel.

Morning Prayer: Tuesdays and Thursdays in the Chapel.

**Important Bus Information**

On Thursday, March 28th, there will be no Barnstable or RTA buses at dismissal. The Over the Bridge Bus schedule is as follows:

Pick up at JP II at 11:40 AM

Drop off at Market Basket 12:10 P.M.

Drop off at St Margaret's at 12:25 P.M.

Drop off at Panera 12:50 P.M.

**FACTS SIS Information Update for the 2024-2025 School Year**

Parents/guardians are asked to update their student's information through the Family Portal for the 2024-2025 school year. Please follow the instructions below and complete

this process as soon as possible. If you have any questions or issues, contact Margaret Keras, Student Accounts, at [mkeras@JPIIHyannis.org](mailto:mkeras@JPIIHyannis.org) or 508-862-6336 x 400.

Access FACTS Family Online Portal:

- Go to [sjpfx-ma.client.renweb.com/pwr/?SchoolCode=SJPFX-MA](http://sjpfx-ma.client.renweb.com/pwr/?SchoolCode=SJPFX-MA)
- Type in your username and password. If you have forgotten your username or password, please click on the reset link provided.
- After logging in, click on Apply/Enroll in the left menu.
- Click on the Enrollment/Reenrollment link.

### **Financial Assistance for the 2023/2024 School Year**

The online application for financial assistance for the 2024-2025 school year is pen. To be considered for financial assistance, you must complete an application each year with FACTS Grant & Aid Assessment. If you have any questions or require assistance, please contact Mrs. Keras, Student Accounts Coordinator, at [mkeras@JPIIHyannis.org](mailto:mkeras@JPIIHyannis.org).

Please click [here](#) for information for students entering Grades 5-8.

Please click [here](#) for information for students entering Grades 9-12

### **School Store**

This week, the school store will be open Monday and Tuesday from 2:45 to 3:30 P.M. Volunteers are needed! Please use the link here to learn more and sign up. For more information, please contact Amy Kowal at [schoolstore@jprihyannis.org](mailto:schoolstore@jprihyannis.org).

### **Share Your Photos!**

Please email pictures of JPII events, sports, and happenings to [photos@jprihyannis.org](mailto:photos@jprihyannis.org).

## **Athletic Schedule**



**St. John  
Paul II School**  
**GRADES 5-8 NEWS**

### **Lenten Food Drive**

The National Junior Honor Society Food Drive ends this Wednesday, March 27. Boxes will be in the gym for donations. Students should place non-perishable food items into the box designated for their grade. Thank you for your anticipated generosity.

### **Community Service**

Mrs. Bentley will host an hour of community service in Room 103 on March 26 from 3-43-4:00 P.M. Students will make Easter cards for the elderly in a local nursing home. Thank you to the Rice family for helping with this endeavor.

### **From the Nurse's Office**

Please provide Mrs. Linnell with an updated copy of your child's most recent

Physical Examination. If insurance allows, children should have a yearly physical exam at their pediatrician's office. You can email, Fax, or send a copy in with your child. Thank you! Email: [llinnell@jprihyannis.org](mailto:llinnell@jprihyannis.org) FAX: 508-771-7233

### **Middle School Spring Sports Clinics**

Beginning the week of **April 8**, students are invited to weekly sports clinics with the varsity coaching staff from 3:15 to 4:30 P.M. Please contact Athletic Director Mike Young at [myoung@jprihyannis.org](mailto:myoung@jprihyannis.org) with any questions.

**Tuesdays:** Women's Basketball with Head Coach Deacon Gus Adams

**Wednesdays:** Men's Soccer with Head Coach Kal Boghdan & Prep HC Jim Kupfer

**Thursdays:** Women's Soccer with Head Coach Larry Palmer

**Fridays:** Men's Basketball with Head Coach Jeff Dillon & Prep Coaches Jim Kupfer and Jay Yamin

**Saturdays:** Open Gym 10:00-11:30 A.M. with Jim Kupfer

### **Lunch Volunteer Opportunity**

The Middle School seeks volunteers to assist with daily lunch distribution from 11:00 A.M. to 12:00 P.M. Your time is appreciated, whether you can spare just one day a week or more. All volunteers must be CORI-cleared. Sign up to volunteer [here](#).

[JPri Parents Facebook](#)

## **THIS WEEK**

### **Thursday, March 28**

Quarter 3 Ends

Holy Thursday, early dismissal, 11:24 A.M.

### **Friday, March 29**

No School- Good Friday

## **LOOKING AHEAD**

### **Monday, April 1**

Easter Monday

Quarter 4 Begins

### **Tuesday, April 2**

No Study Hall

HSA Meeting

### **Thursday, April 4**

All School Musical Performance, 10:00 A.M.

### **Friday, April 5**

*Shrek the Musical*, 7:00 P.M.

### **Saturday, April 6**

*Shrek the Musical*, 2:00 P.M.



**St. John  
Paul II School**  
**GRADES 9-12 NEWS**

### **Spring Sports**

All students must have an updated physical on Family ID, or they cannot practice. Click [here](#) for Family ID.

### **Lenten Food Drive**

Theology classes are holding a non-perishable food drive until Thursday, March 28. Almsgiving is a key part of Lent—please consider helping those less fortunate. Boxes are in theology classrooms.

### **International Women's Month**

In honor of International Women's Month, Persist is supporting our school community and A Baby Center's *Dottie Project* by collecting donations of feminine hygiene items. Donations can be brought to the bins outside of Ms. McLeod's office or Ms. Poirier's room. Additionally, cash or check donations can be brought to the main office. Donations will be used to create supply bags that will be available to our students as well as to support the Dottie Project. Please reach out to Ms. Poirier ([apoirier@jpiihyannis.org](mailto:apoirier@jpiihyannis.org)) with any questions. Thank you!

## THIS WEEK

### Thursday, March 28

Quarter 3 ends

Holy Thursday, early dismissal, 11:24

### Friday, March 29

Good Friday, No school

## LOOKING AHEAD

### Monday, April 1

Easter Monday

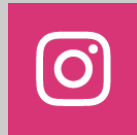
Quarter 4 Begins

### Friday, April 5

Shrek the Musical, 7:00 P.M.

### Saturday, April 6

*Shrek the Musical*, 2:00 P.M.



St. John Paul II School | 120 High School Road, Hyannis, MA 02601 [www.JPIIHyannis.org](http://www.JPIIHyannis.org)

[Unsubscribe](#) [jcanzano@jpiihyannis.org](mailto:jcanzano@jpiihyannis.org)

[Update Profile](#) | [Constant Contact Data Notice](#)

Sent by [jcanzano@jpiihyannis.org](mailto:jcanzano@jpiihyannis.org) powered by



Try email marketing for free today!